

# **Agenda**

COLLEGE OF ENGINEERING  
LEADERSHIP COUNCIL MEETING  
3609 ENGINEERING HALL  
Wednesday, December 17, 2014  
1:00 PM - 2:30 PM

## **Announcements**

- |                                   |                                    |                  |
|-----------------------------------|------------------------------------|------------------|
| <b>1. Approval of the Minutes</b> |                                    | <b>Kuech</b>     |
| <b>2. 1:00 – 1:15</b>             | <b>Departmental Voting Rules</b>   | <b>Booske</b>    |
| <b>3. 1:15 – 1:25</b>             | <b>Shop fee structure</b>          | <b>Blanchard</b> |
| <b>4. 1:25- 1:55</b>              | <b>Merger of MSP into MS&amp;E</b> | <b>Stone</b>     |
| <b>5. 1:55- 2:30</b>              | <b>Policy on Professorships</b>    | <b>Robertson</b> |
| <b>6. Adjourn</b>                 |                                    |                  |

# Minutes

COLLEGE OF ENGINEERING  
LEADERSHIP COUNCIL MEETING  
3609 ENGINEERING HALL  
Wednesday, December 3, 2014  
1:00 PM - 2:30 PM

**Attendance:** Blanchard, Booske, Dietrich, Gandhi, Hagness, Kuech, McPherson, Meyerand, O'Leary, Robertson, Romero

## Announcements

Dietrich: The new computer purchase process can be communicated at faculties by D. Dietrich

Blanchard: Office 365 will be introduced into the CoE by March

### 1. Approval of the Minutes **Kuech**

Gandhi/O'Leary moved and seconded the approval of the minutes

### 2. 1:00- 1:05 **Start-up funds for faculty offers to be made in 2014-15** **Hagness**

Hagness introduced the central 'Box' folder system for start-up offers. These include the template forms for building the start-up offer, including the budget spreadsheet. Information and status will be communicated through a comments function in the folder for an individual candidate.

### 3. 1:05 – 2:00 **Undergraduate enrollment management** **Robertson Blanchard**

A discussion of the spring enrollment numbers were presented for the departments. The factors affecting capacity and addressing the influx of students were discussed.

### 4. 2:00 – 2:25 **Materials Science Center fee structure proposal** **Hagness Robertson**

The budgetary issues associated with the Materials Science Center were discussed. The issues of fee structure was presented.

**5. 2:25 - 2:30      Departmental support for PIs  
leading large proposal efforts**

**Hagness  
Robertson**

Two large NSF initiatives are in progress and support is needed for individuals within the departments during the proposal process.

**6. Adjourn**

DRAFT

# Graduate degree in Materials Science and Engineering

Strong support for interdisciplinary  
participation from across campus

Draft 11\_20\_14

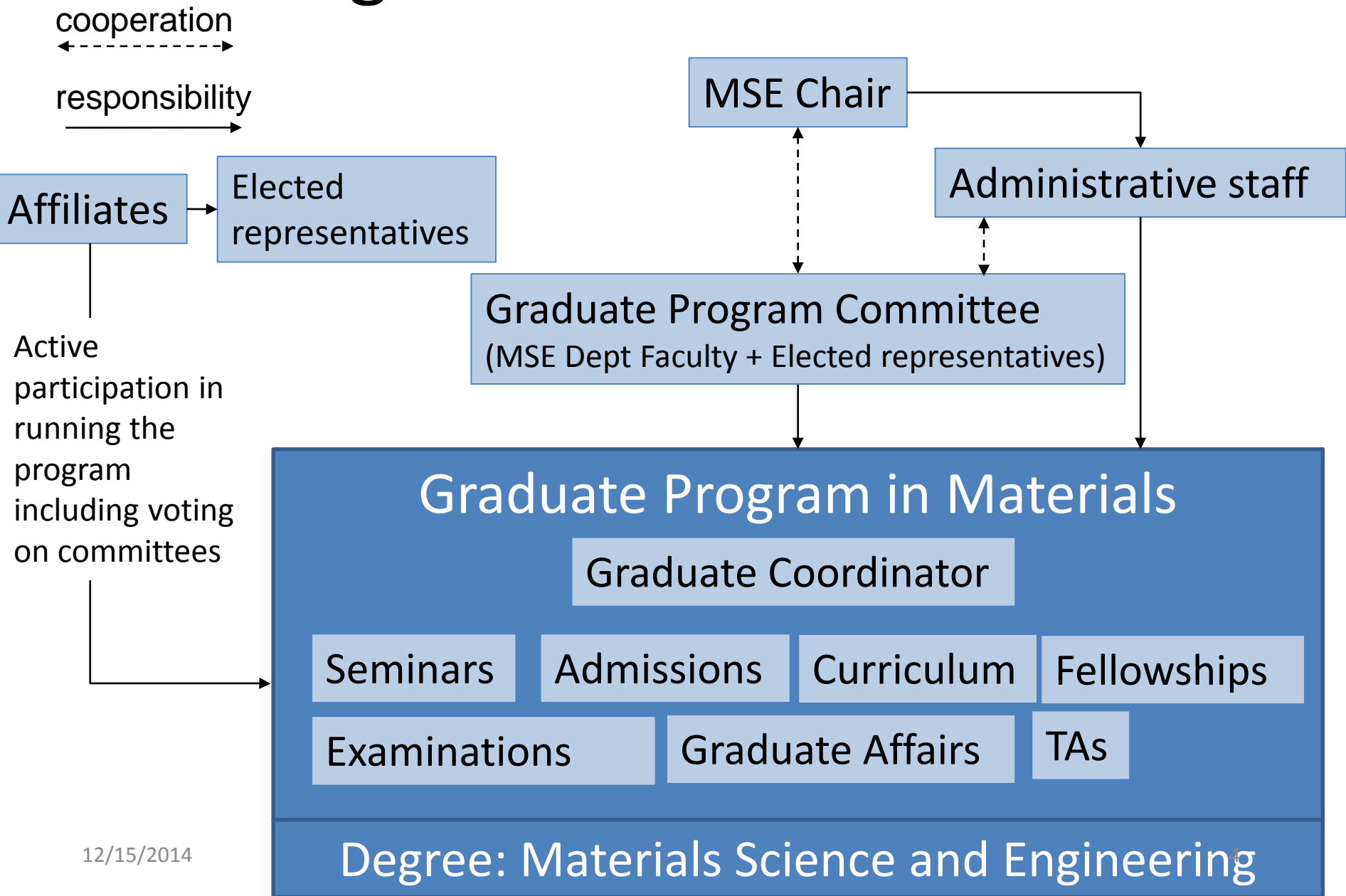
# Goals

- Provide best graduate education:
  - Give students depth in their own areas or research, but with enough breadth at a fundamental level to enable them to easily expand into new areas
  - Enhance our “brand” by putting out uniformly, well-trained students who can move into leadership positions in research, education, industry, and policy
- Enhance Research in Materials across campus:
  - Attract the best graduate students
  - Support campus-wide, interdisciplinary research in materials
- Small modification of previously (approved) plan consistent with Dean’s requirements:
  - Program is housed in MSE, which becomes responsible for running the program but ensures that needs of affiliate faculty are well-served
  - Operation is consistent with FPP and is workable, long-term

# Approach

- Keep as close to intent and structure of MSP/MatE plan as possible
  - MSP voted to approve this plan with the understanding that further modifications would be minor (no “bait and switch,” which has been a concern of MSP)
- Bring Program into department
  - But have new plan work better than MSP-voted plan to support the needs of Materials researchers across campus
- Assign problem of merging the curricula to an ad-hoc committee that has 1 year

# Organizational structure

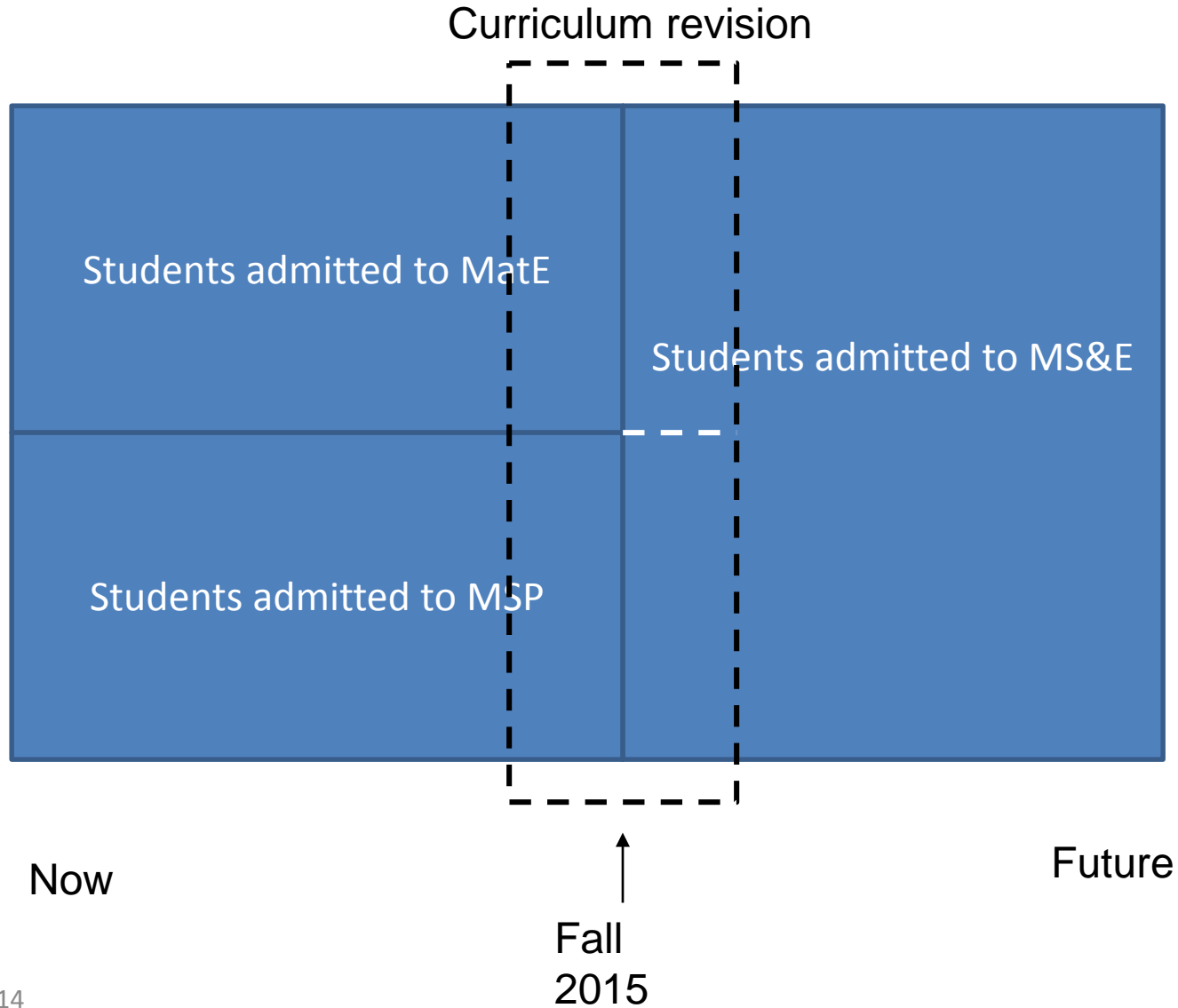


# How the program will change for Graduate students

- Students already in program grandfathered in; they may request change to new program if they wish
- Maintain parallel sets of requirements from existing MSP/MatE
- Ad-hoc committee merges requirements in first year



# Timeline



# Assurance of Inclusion and Interdisciplinary participation for affiliate faculty

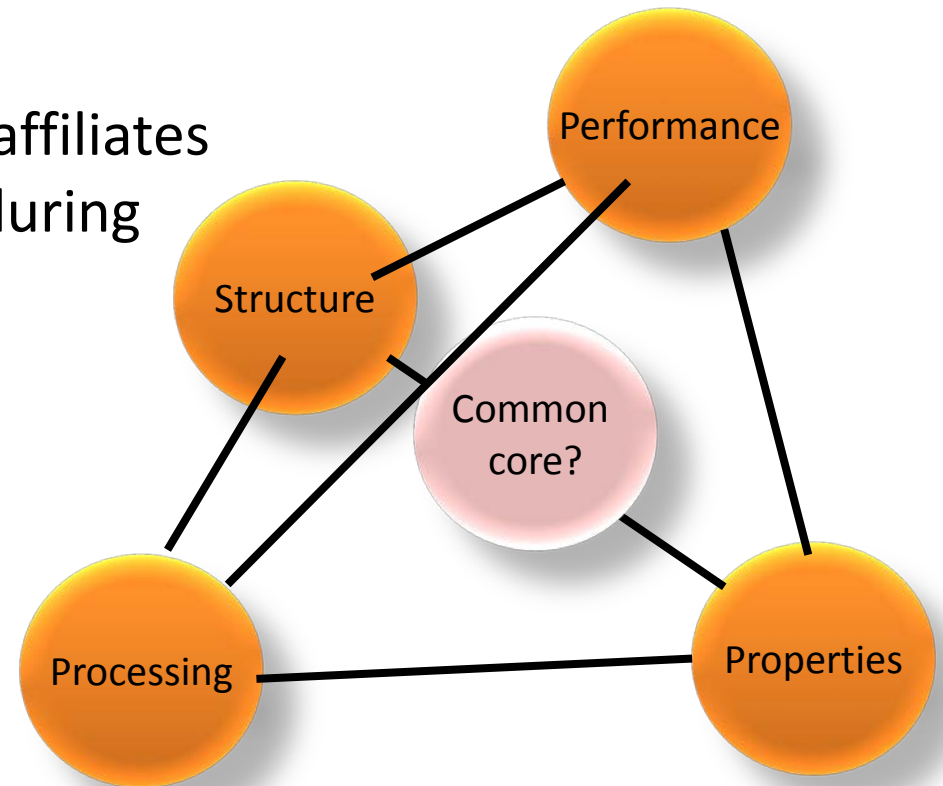
- Affiliates (FP&P 5.13) participate on committees in graduate program – (admissions, seminars, grad affairs, exams, curriculum, etc.)
- Committee membership published yearly
- Affiliates representatives, elected at-large to vote with MSE faculty on matters pertaining to the graduate program, are automatically given joint governance appointments (FP&P 5.12) in the department to vote on matters pertaining to control of grad program
- Once-per-year department meeting devoted to graduate program and open to all affiliates (affiliates may bring up concerns/recommendations, etc., at other times as well)
- Department bylaws treat affiliate faculty fairly with regard to access to graduate students and graduate student support.
- Affiliate faculty will have the opportunity to meet with the CoE Dean and/or associate dean once per year for 5 years to assess progress and performance of the program and to recommend changes in department by-laws.

# Affiliate Requirements

- Procedures for admission into affiliate program provided in accompanying document
- Faculty having advised program students within the past 10 years admitted by vote of MSE directly into program as part of adoption procedures
- Other MSP faculty admitted if they request at beginning of merger
- Department reviews affiliate appointments every 3 years
- Affiliate faculty hold responsibility to participate 1 year on committees for every 3 years of affiliate status

# Curriculum/Requirements

- Students already here grandfathered in
- Maintain old structures – new students can choose MSP or MatE model with advice and consent of their committee
- Ad hoc committee of MSE and affiliates works to merge requirements during first year



# What Affiliates will gain

- Greater input and access to running program
- More faculty support for graduate program
- Access to MS&E department development (fundraising) efforts to support seminars, graduate fellowships, etc.

# What affiliates lose from present MSP/MatE

- 1 person 1 vote, however:
  - This was already in place in existing plan
  - Affiliate representatives elected at large to represent voting interests of affiliate faculty on matters of graduate education in Materials (number of reps  $\geq$  25% of MSE faculty , requiring supermajority of MSE to overrule affiliates)
  - Faculty affiliates encouraged to serve on committees that make recommendations to MSE faculty
- Vote on affiliate membership (this was a potential source of conflict in previous plan); instead:
  - Affiliate membership decided by MSE faculty following FP&P
  - We publish department guidelines for affiliate status including: rights, responsibilities, appeals and grievance procedures
  - MSP members with students or participation in past 10 years automatically grandfathered in, then reviewed every three years
  - MSP faculty beyond 10 years who request can be placed as affiliates, then reviewed every 3 years

# Graduate degree in Materials Science and Engineering

Strong support for interdisciplinary  
participation from across campus

Draft 11\_20\_14

# Goals

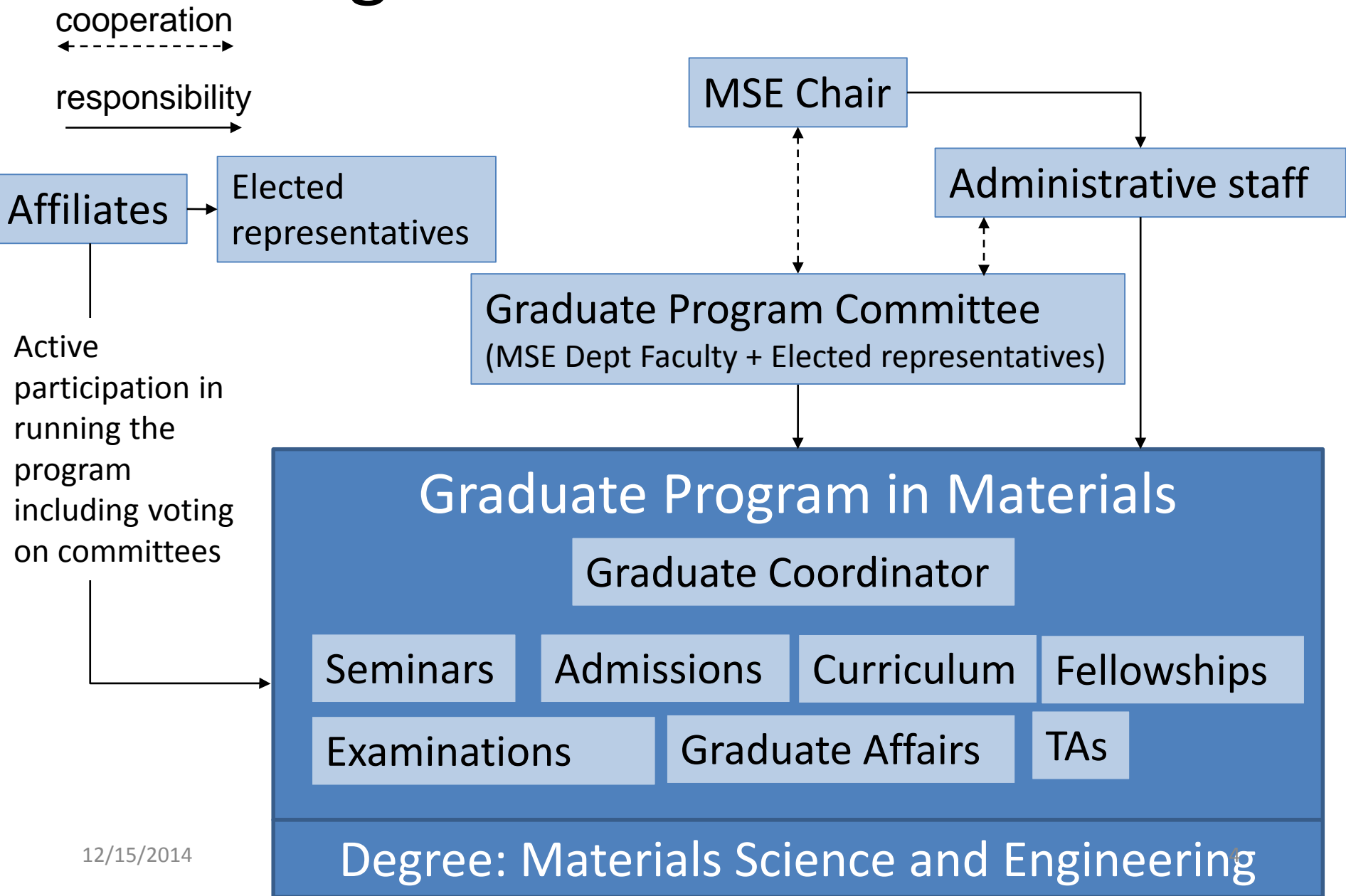
- Provide best graduate education:
  - Give students depth in their own areas or research, but with enough breadth at a fundamental level to enable them to easily expand into new areas
  - Enhance our “brand” by putting out uniformly, well-trained students who can move into leadership positions in research, education, industry, and policy
- Enhance Research in Materials across campus:
  - Attract the best graduate students
  - Support campus-wide, interdisciplinary research in materials
- Small modification of previously (approved) plan consistent with Dean’s requirements:
  - Program is housed in MSE, which becomes responsible for running the program but ensures that needs of affiliate faculty are well-served
  - Operation is consistent with FPP and is workable, long-term



# Approach

- Keep as close to intent and structure of MSP/MatE plan as possible
  - MSP voted to approve this plan with the understanding that further modifications would be minor (no “bait and switch,” which has been a concern of MSP)
- Bring Program into department
  - But have new plan work better than MSP-voted plan to support the needs of Materials researchers across campus
- Assign problem of merging the curricula to an ad-hoc committee that has 1 year

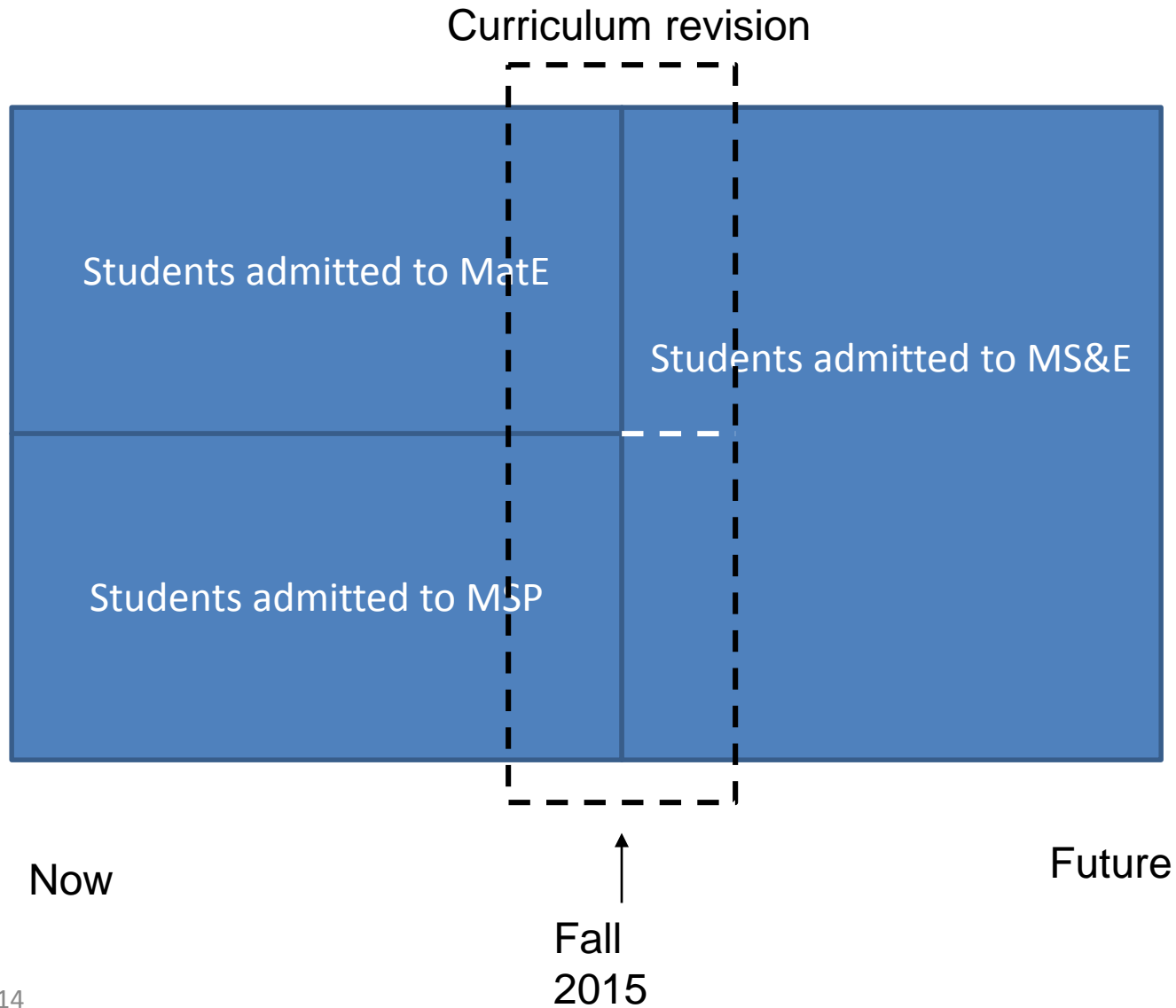
# Organizational structure



# How the program will change for Graduate students

- Students already in program grandfathered in; they may request change to new program if they wish
- Maintain parallel sets of requirements from existing MSP/MatE
- Ad-hoc committee merges requirements in first year

# Timeline



# Assurance of Inclusion and Interdisciplinary participation for affiliate faculty

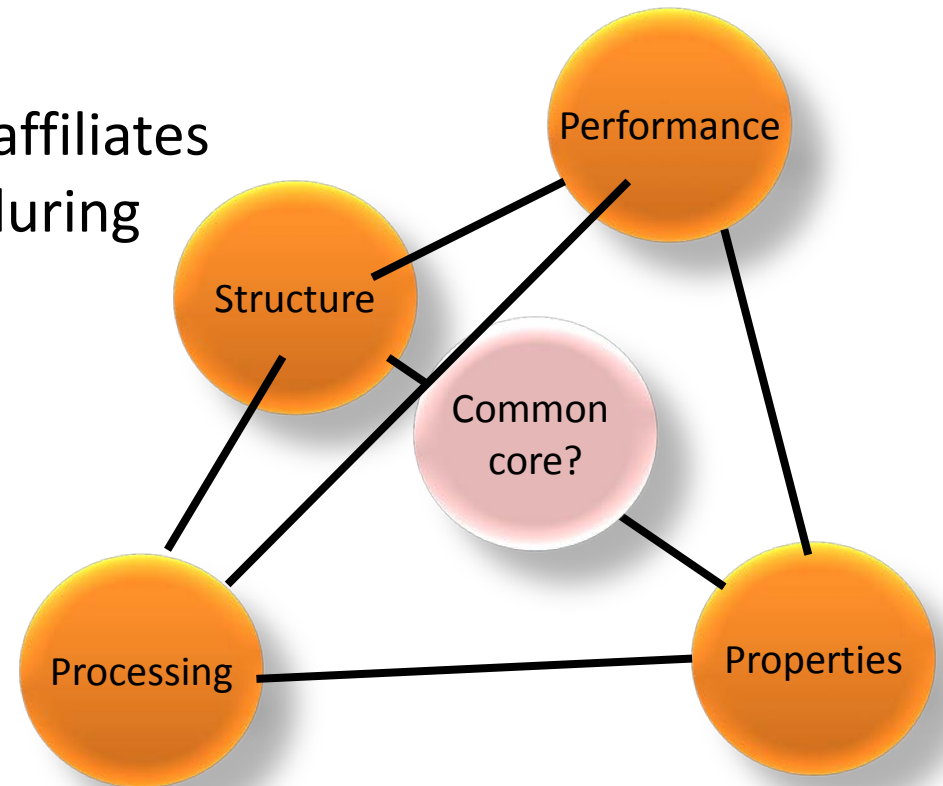
- Affiliates (FP&P 5.13) participate on committees in graduate program – (admissions, seminars, grad affairs, exams, curriculum, etc.)
- Committee membership published yearly
- Affiliates representatives, elected at-large to vote with MSE faculty on matters pertaining to the graduate program, are automatically given joint governance appointments (FP&P 5.12) in the department to vote on matters pertaining to control of grad program
- Once-per-year department meeting devoted to graduate program and open to all affiliates (affiliates may bring up concerns/recommendations, etc., at other times as well)
- Department bylaws treat affiliate faculty fairly with regard to access to graduate students and graduate student support.
- Affiliate faculty will have the opportunity to meet with the CoE Dean and/or associate dean once per year for 5 years to assess progress and performance of the program and to recommend changes in department by-laws.

# Affiliate Requirements

- Procedures for admission into affiliate program provided in accompanying document
- Faculty having advised program students within the past 10 years admitted by vote of MSE directly into program as part of adoption procedures
- Other MSP faculty admitted if they request at beginning of merger
- Department reviews affiliate appointments every 3 years
- Affiliate faculty hold responsibility to participate 1 year on committees for every 3 years of affiliate status

# Curriculum/Requirements

- Students already here grandfathered in
- Maintain old structures – new students can choose MSP or MatE model with advice and consent of their committee
- Ad hoc committee of MSE and affiliates works to merge requirements during first year



# What Affiliates will gain

- Greater input and access to running program
- More faculty support for graduate program
- Access to MS&E department development (fundraising) efforts to support seminars, graduate fellowships, etc.



# What affiliates lose from present MSP/MatE

- 1 person 1 vote, however:
  - This was already in place in existing plan
  - Affiliate representatives elected at large to represent voting interests of affiliate faculty on matters of graduate education in Materials (number of reps  $\geq$  25% of MSE faculty , requiring supermajority of MSE to overrule affiliates)
  - Faculty affiliates encouraged to serve on committees that make recommendations to MSE faculty
- Vote on affiliate membership (this was a potential source of conflict in previous plan); instead:
  - Affiliate membership decided by MSE faculty following FP&P
  - We publish department guidelines for affiliate status including: rights, responsibilities, appeals and grievance procedures
  - MSP members with students or participation in past 10 years automatically grandfathered in, then reviewed every three years
  - MSP faculty beyond 10 years who request can be placed as affiliates, then reviewed every 3 years